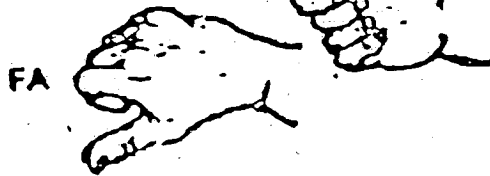
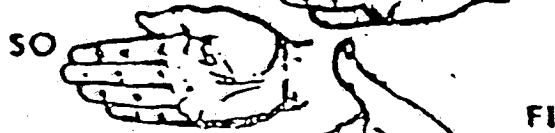


HAND SIGNS

Curwen Hand Signs



o = 4 : m

d. = 3 : m

d = 2 : h

d = 1 : f

♪ = $\frac{1}{2} + \frac{1}{2}$: ↓

♪♪♪ = $\frac{1}{4} + \frac{1}{4} + \frac{1}{4} + \frac{1}{4}$: w